



Roaster maintenance service

We're experts in reducing emissions
to lower the environmental impact



VOLTUMACHINE
INGENIERÍA CAFETERA



Why does your roaster need maintenance?



Even if you clean your roaster on a daily basis, it is still a machine with components that get **out of tune** with use and that have an **expected lifetime**.

Good maintenance service is a great investment for the overall good efficiency of your equipment. It improves equipment safety and **saves you money** in the long term by avoiding **unexpected breakdowns and failures**.

With time, the burner deteriorates and **emissions increase**, therefore there's **mandatory maintenance** once a year in most EU countries. This helps you ensure a good **quality roast**, and archive **low CO2 emissions**.

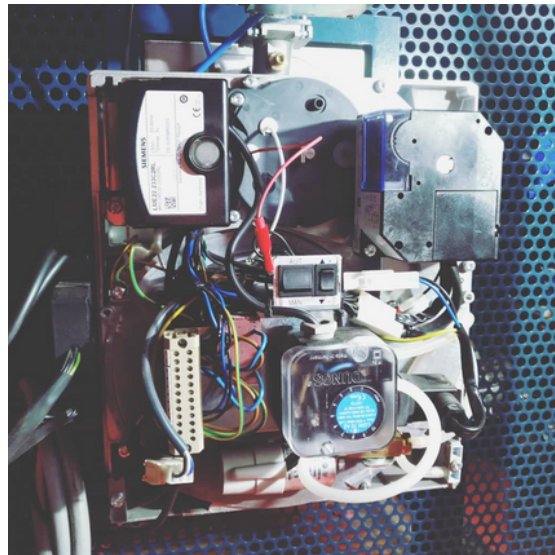
Depending on how dark your roast is, more oil from the grain will be released, getting to the fans and accumulating, thus changing flavors and aroma. This is especially a problem in recirculating systems.

Our team of specialists performs detailed **inspection, regulation, and maintenance** according to the **highest standards** to obtain maximum energy efficiency, thus **cutting down on energy costs**, maintaining **high production volumes** and ensuring a **high quality roast**.

Let's reduce the CO2 footprint together!
We contribute by reducing environmental impact.



Our service includes:



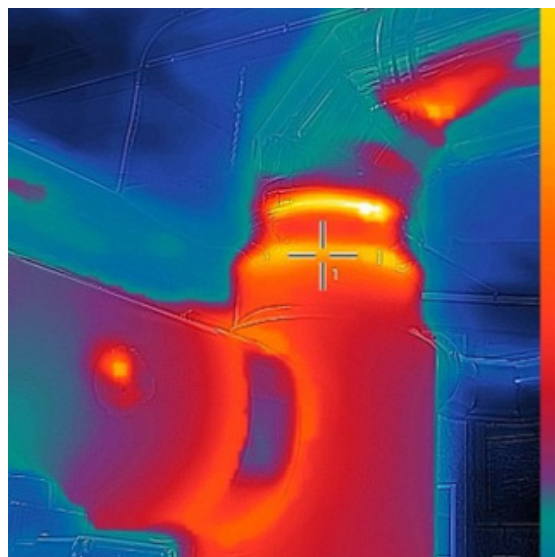
- Maximize energy efficiency
- Gas burner control
- Emission report

Fans are disassembled, and consumption measurements are made to improve the useful life of motors.

The gas burner is disassembled to inspect the wear on the nozzles. The power of the ignition spark and wear of the flame detector are checked.

The stability of the gas system is checked, measuring internal pressure and identifying possible gas losses.

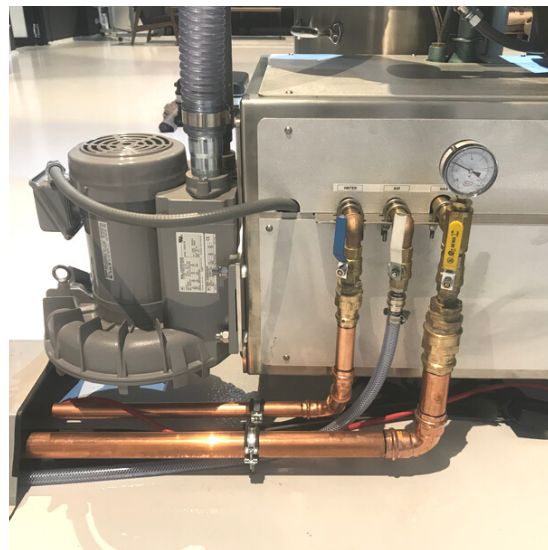
Thermographic photographs are taken of the combustion chamber to avoid energy losses.



We guarantee the correct maintenance of the toaster,
with a more sustainable roasting.



We also offer maintenance for your:



- Chimneys
- Air compressor
- Coffee grinder
- Packaging machine
- Deep cleaning
- (Dis)assembly,
manipulation and
installation of machines
and equipment

As we promote efficient, sustainable processes
we add value to your product while reducing the carbon footprint together.



Why us?

The company's headquarters are in Copenhagen, while our technical teams are in other countries in Europe and America. In this way, we assure you to meet your needs quickly **anywhere in the world**.

We know that your roasting machines are the heart of your business, and this is why **our maintenance team is certified** and prepared to take into account legal, technical, and administrative regulations, regardless of which country you are in.

We offer **personalized emissions report**, which includes a report with proposals for improvement so your company can continue on the path of sustainability and energy efficiency using the available resources.

We provide scalable solutions, with less initial expenses and with a greater return on investment for our clients.



Let's get in touch



info@voltumachine.com



+45 60 48 41 39



Based in Denmark we provide services on all continents.



VOLTUMACHINE
INGENIERÍA CAFETERA